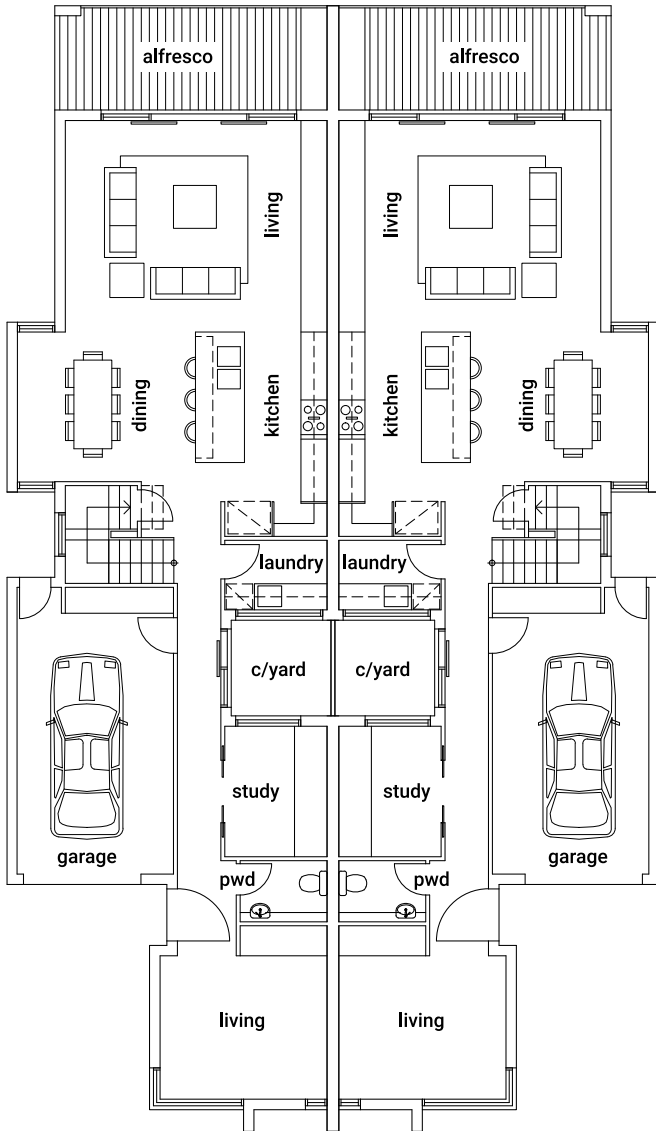
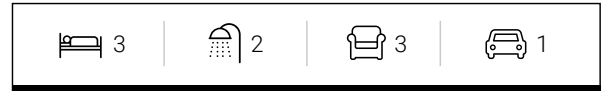
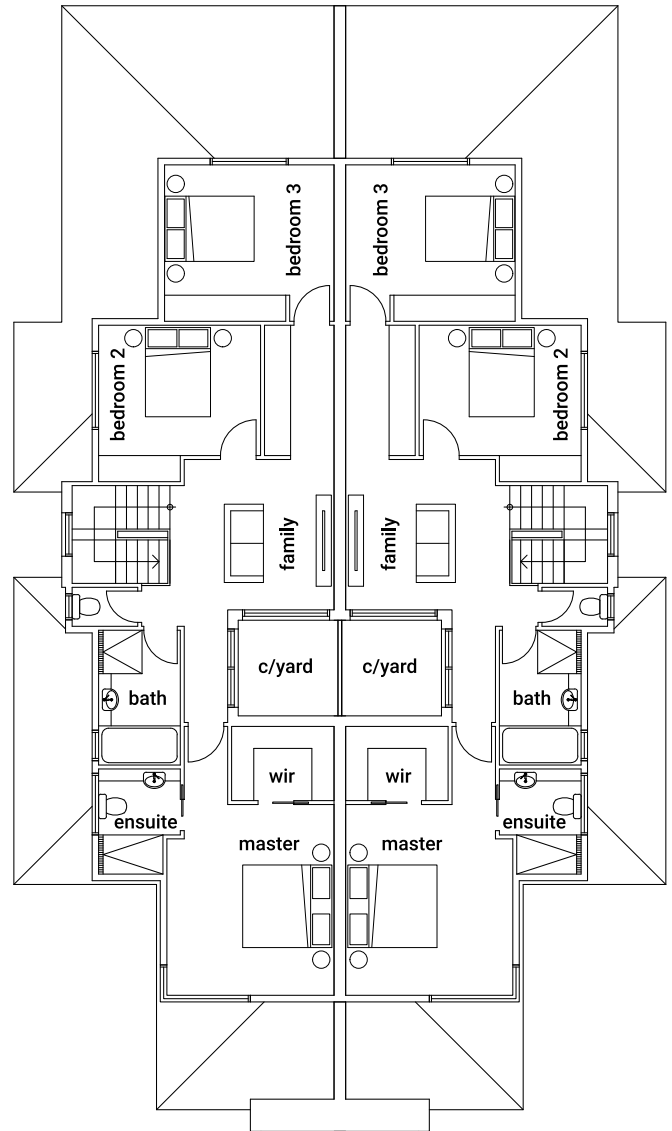




Dual occupancy and individuality needn't be mutually exclusive. With a choice of two captivating facades offering a timeless or modern aesthetic, and 28 squares of comfort inside, you'd be forgiven for thinking you're in a freestanding luxury home – such is the sense of space. On the ground floor, a generous living area leads to a dynamic alfresco space that celebrates the warmth and ease of outdoor entertaining. While the second floor presents a welcome retreat, with nooks for hiding away and indulging in a little relaxation.



Ground Floor



First Floor

GROUND FLOOR

Living 1	3.3 x 3.8 m
Garage	6.6 x 3.6 m
Study	3.0 x 2.3 m
Living 2	3.3 x 4.0 m
Dining	3.3 x 4.0 m
Kitchen	4.7 x 3.0 m
Alfresco	2.3 x 6.2 m
<b>Total Ground Floor</b>	<b>157 sq/m</b>

FIRST FLOOR

Master	4.4 x 3.8 m
Family	3.4 x 3.7 m
Bedroom 2	3.0 x 3.7 m
Bedroom 3	3.0 x 3.9 m
<b>Total First Floor</b>	<b>98 sq/m</b>

OVERALL DIMENSIONS

Overall Length	19.4 m
Overall Width	15.0 m
<b>Total House Area</b>	<b>255 sq/m</b>
<b>Overall area of both dwellings</b>	<b>510 sq/m</b>