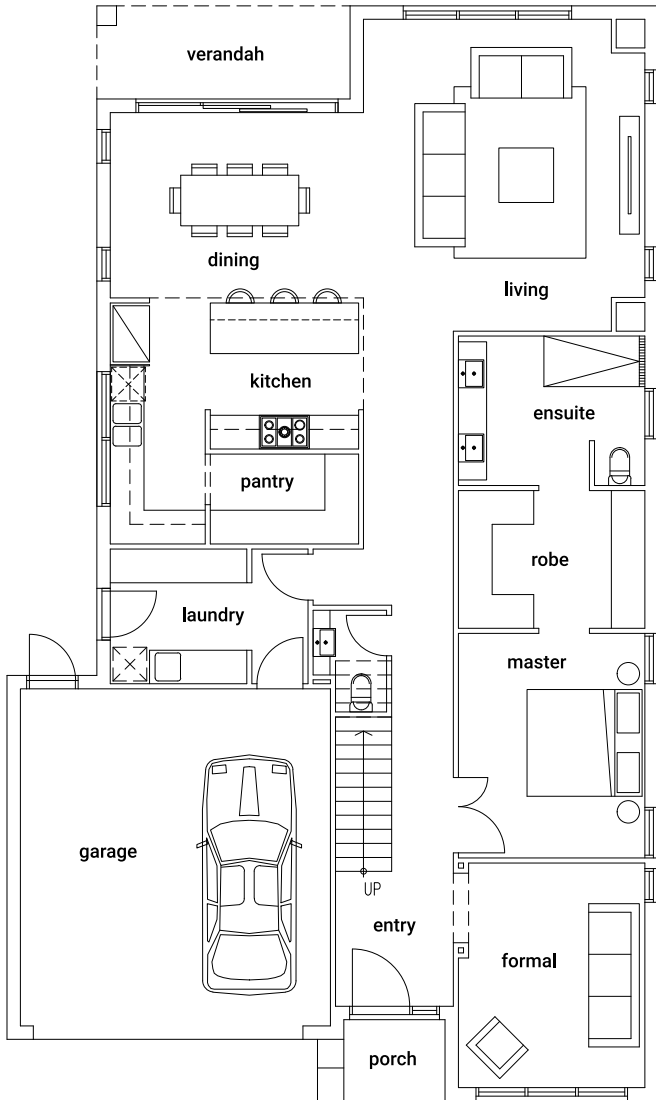
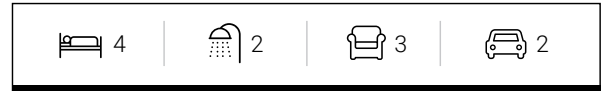
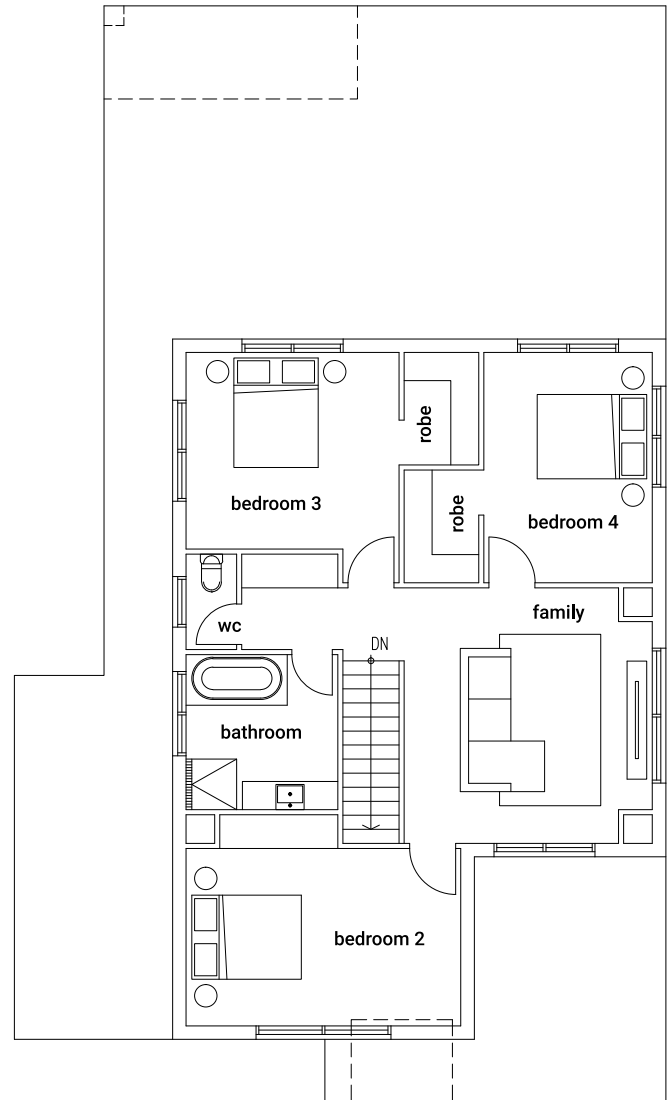




Sometimes more is more. That's why not a square metre is wasted in this stylish family home. Here, you'll find more living space and more carefully considered features, all custom fit for the busy modern lifestyle. From the moment you open the door, you'll find a sophisticated family haven that's as flexible as it is beautiful, complete with a luxurious master bedroom and ensuite as well as an expansive living and dining area for everyone to relax in. And whether the occasion calls for evening drinks on the veranda or a more formal dining experience – this home caters to your every mood and need.



Ground Floor



First Floor

GROUND FLOOR

Garage	6.0 x 5.5 m
Kitchen	2.7 x 4.5 m
Dining	3.4 x 4.5 m
Living	5.5 x 5.0 m
Master Bedroom	4.0 x 3.3 m
Formal	4.0 x 3.3 m
Total Ground Floor	201 sq/m

FIRST FLOOR

Bedroom 2	3.2 x 4.9 m
Bedroom 3	3.5 x 3.8 m
Bedroom 4	4.1 x 3.0 m
Family	4.5 x 4.4 m
Total First Floor	98 sq/m

OVERALL DIMENSIONS

Overall Length	19.5 m
Overall Width	11.6 m
Total House Area	299 sq/m