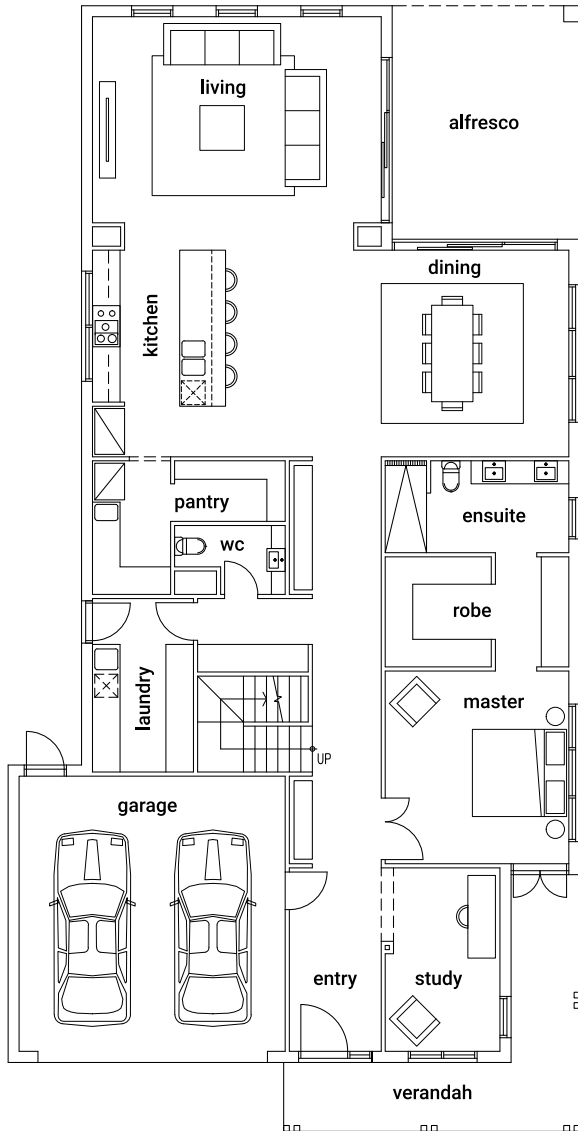
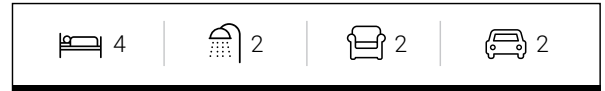
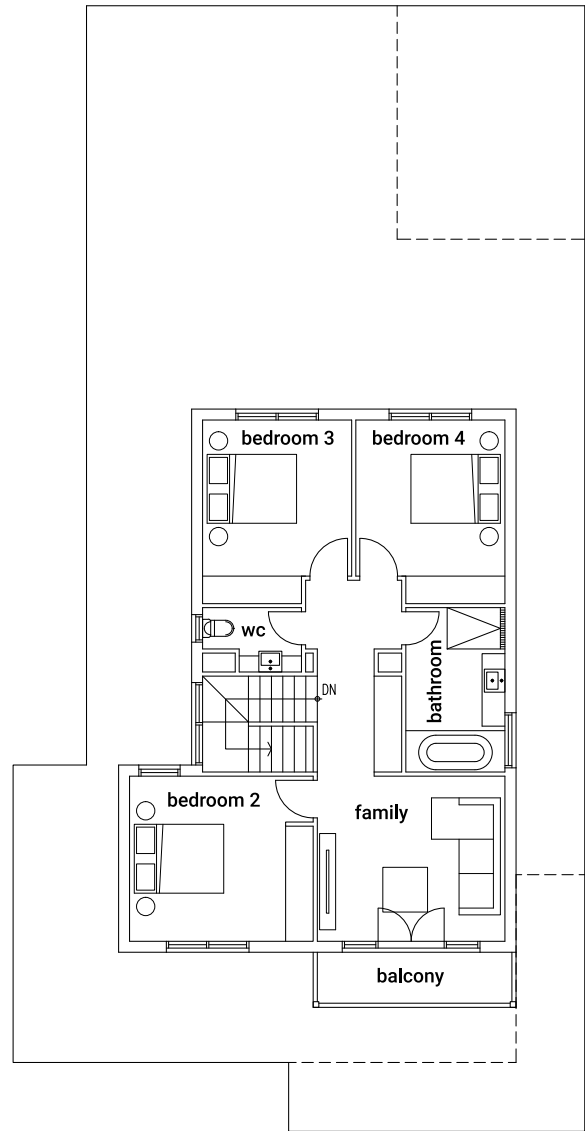




Choose from the charming street appeal of our Hamptons facade, or a dynamic contemporary look. Inside, dazzling floor-to-ceiling windows create flowing, open living spaces, extending to an alfresco entertaining area that's custom made for the intrinsically Australian mode of indoor/outdoor entertaining. With 37 squares, there's ample room to work, live and play. And with considered touches like a large, walk-in robe so you can finally say goodbye to storage woes – everyday details are elevated at each turn.



Ground Floor



First Floor

GROUND FLOOR

Garage	6.0 x 5.8 m
Kitchen	4.5 x 2.9 m
Living	5.1 x 6.3 m
Dining	4.5 x 4.6 m
Master	4.2 x 4.0 m
Study	4.0 x 2.5 m
Total Ground Floor	270 sq/m

FIRST FLOOR

Bedroom 2	3.6 x 3.4 m
Bedroom 3	3.4 x 3.3 m
Bedroom 4	3.4 x 3.3 m
Family	3.6 x 4.1 m
Total First Floor	95 sq/m

OVERALL DIMENSIONS

Overall Length	23.03 m
Overall Width	12.46 m
Total House Area	365 sq/m