

MODE 1 FACADE

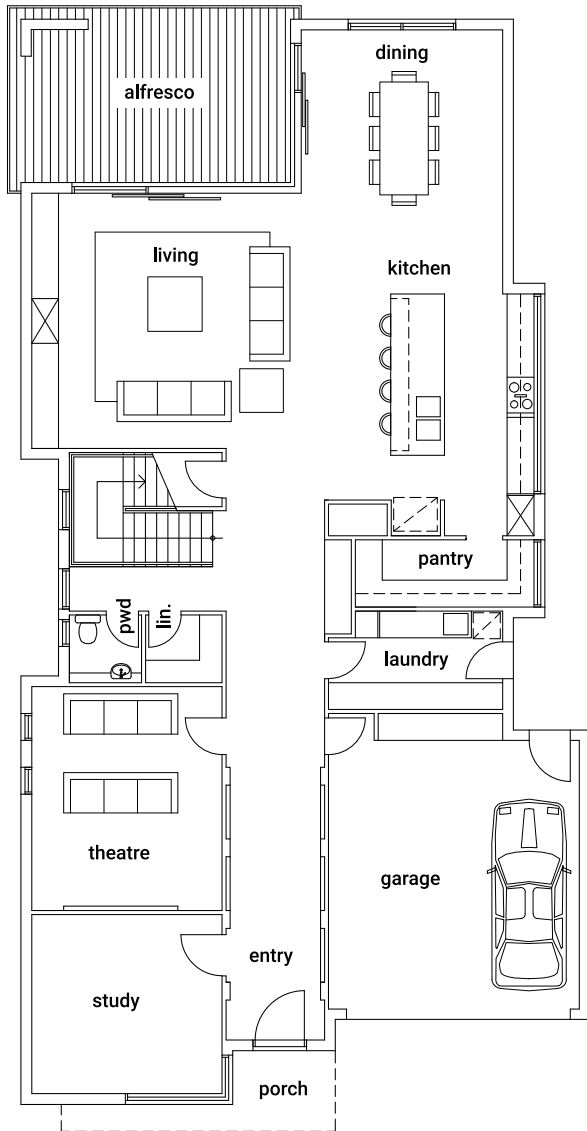


MODE 2 FACADE

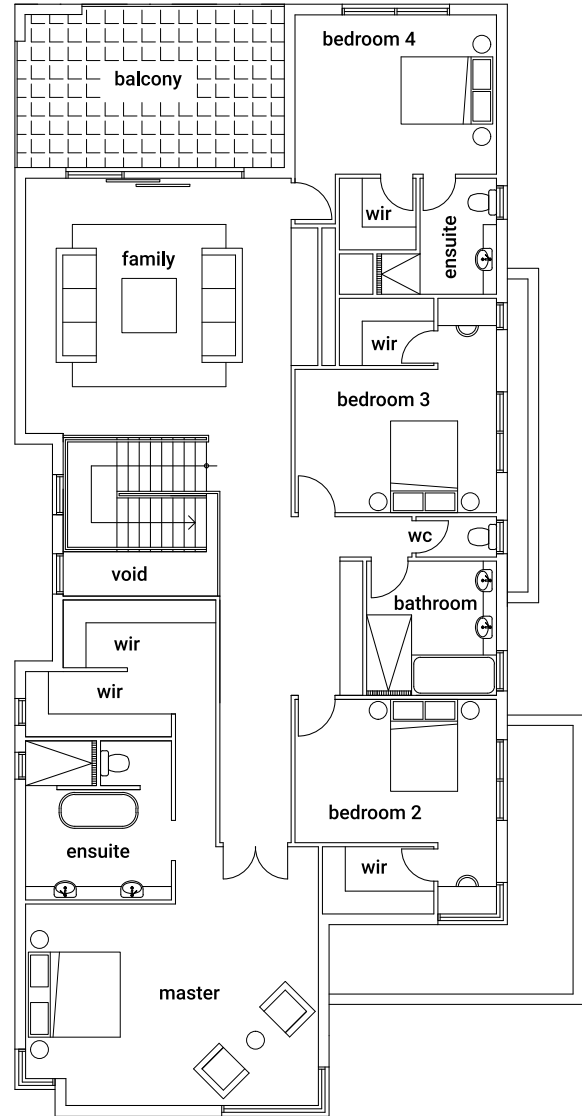


MODE 3 FACADE

Select from three impressive facades – Georgian, contemporary and modernist – each as stylish, warm and welcoming as it is functional. The roomy interior is in equal parts lavish and inviting, featuring clever touches that make all the difference like a home cinema and study. While welcoming alfresco doors lead to an area equally suited to relaxing and entertaining with family and guests. With all-important details like fine joinery and a clever use of space, this home has a feeling of intimacy and connection that belies its 54-square size.



Ground Floor



First Floor

GROUND FLOOR

Study	4.0 x 4.2 m
Theatre	5.0 x 4.2 m
Garage	6.6 x 5.6 m
Living	5.7 x 6.0 m
Dining	4.5 x 5.0 m
Kitchen	5.4 x 3.3 m
Alfresco	3.6 x 6.0 m
<b>Total Ground Floor</b>	<b>275 sq/m</b>

FIRST FLOOR

Master	4.5 x 6.5 m
Family	5.7 x 5.9 m
Bedroom 2	3.3 x 4.5 m
Bedroom 3	3.2 x 4.5 m
Bedroom 4	3.5 x 4.5 m
Balcony	3.6 x 6.0 m
<b>Total First Floor</b>	<b>251 sq/m</b>

OVERALL DIMENSIONS

Overall Length	24.84 m
Overall Width	12.70 m
<b>Total House Area</b>	<b>526 sq/m</b>